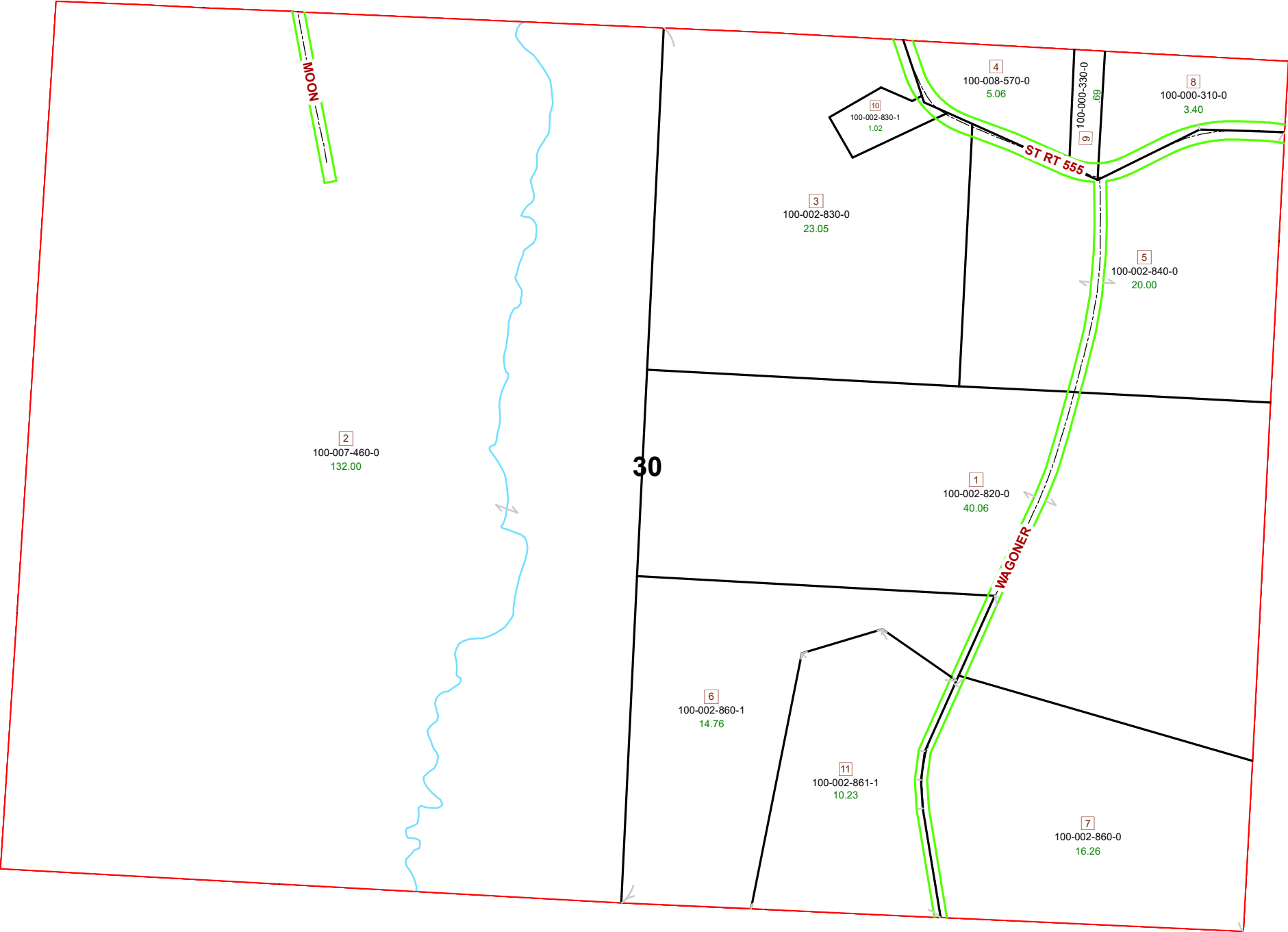
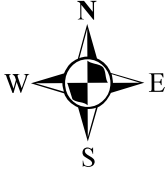


MARION TOWNSHIP FRACTION 30 R12 TWP 8 MORGAN COUNTY, OH



PIN	Owner	VOL	PAGE	LegalDescr	Acres
100-000-310-0	HERSHBERGER JOE & VERNA	OR213	330	R12 T08 S00 FR 30	3.4
100-000-330-0	HERSHBERGER JOE & VERNA	OR213	330	R12 T08 S00 FR 18	0.698
100-002-860-0	HERSHBERGER JOE J & VERNA U	OR227	611	R12 T08 S00 FR 30	16.26
100-002-820-0	HERSHBERGER JOE J & VERNA U	OR178	43	R12 T08 S00 FR 30	40.06
100-002-840-0	HERSHBERGER JOE J & VERNA U	OR178	43	R12 T08 S00 FR 30	20
100-002-830-0	HERSHBERGER JOE J & VERNA U	OR178	43	R12 T08 S00 FR 30	23.056
100-002-861-1	KIRKBRIDE JEREMY T & AMY B	OR210	2799	R12 T08 S00 SD 11	10.239
100-002-830-1	PAROCHIAL SCOOL BOARD OF FAIRVIEW	D.V 185	223	R12 T08 S00 SD 10	1.022
100-007-460-0	SLISHER GEORGE D & MARLA K	OR11	236	R12 T08 S30 SD 2 S	132
100-002-860-1	SLISHER GEORGE D & MARLA K	OR189	534	R12 T08 S00 SD 6 S	14.761
100-008-570-0	TOTTEN FRANK K	D.V 196	458	R12 T08 S00 FR 30	5.06



Boundaries	
----- Hidden	--- ROW
--- Hydro	--- Section
--- Roads	--- Lot
--- County	--- Township
--- Parcel	--- Parcels

